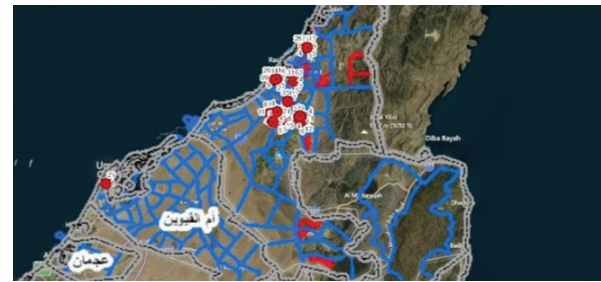


National Bureau of Statistics

The National Bureau of Statistics (NBS) realized the need for a complete solution that would allow their data to be in a single central database. To effect this, NBS implemented a flexible and scalable enterprise GIS Solution that retains robust functionality while being easy to use, access and maintain. Also they realized that the implementation of a GIS to assist with decision-making needs to be undertaken carefully in order to ensure

that the maximum data quality is maintained throughout the decision loop. The following issues are important to consider : Complexity of the reality being mapped, Data quality, Cost, Time, etc.

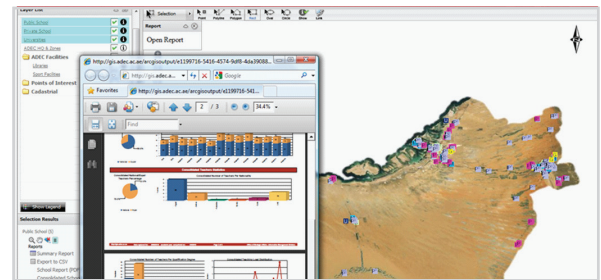
As part of this project for NBS, GISTEC provides future system upgrades, complete system support, simple system administration. A number of applications were also derived from the Enterprise GIS, namely mobile apps, web forms and reports to fulfill NBS's vision to organize the work of the national statistical system.



Abu Dhabi Educational Council

The Abu Dhabi Educational Council (ADEC) contracted GISTEC to develop and build its enterprise GIS solution, including a web-based mapping application for schools and students, using the Geocortex Essentials product and Esri ArcGIS Server.

The web application helped ADEC in assisting users and executives in formulating evidence-based decisions. The integration of GIS at ADEC is in line with ADEC's 10-year Strategic Plan regarding utilization of current school buildings, planning the future locations of new schools and reducing student performance gaps between areas.



GISTEC specializes in providing high-tech engineering solutions, software systems, data products, specialized hardware, and technical services in the following fields:

Geographic Information System (GIS)
Utility and Telecom
Facility / Asset Management
Geographic Imaging for Remote Sensing
Digital Map Production
Web-based Mapping
Energy and Oil & Gas